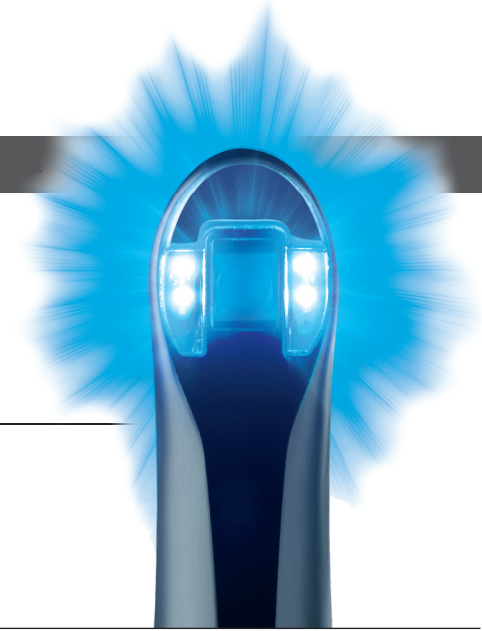




Light Induced Fluorescence Evaluator

# SOPROLIFE



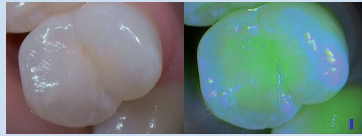
Diagnostic mode

Treatment mode

HEALTHY TEETH

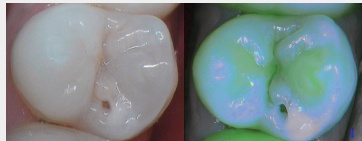


Healthy dentin



Healthy and thick enamel appears in blue at the cusps. Healthy dentin is green

CARIOUS LESIONS

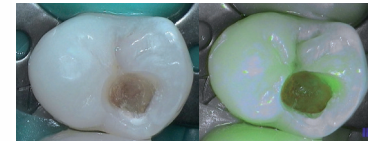


Lack of fluorescence shows the presence of an enamo-dental carious lesion (demineralization)

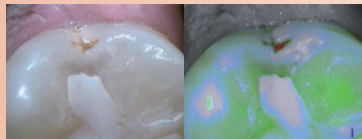
Cavity opening



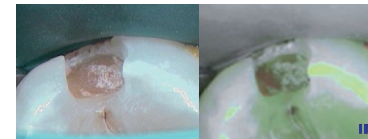
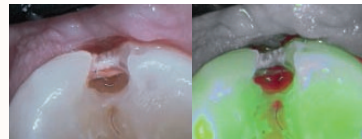
End of the excavation



The floor of the cavity is green: the active caries is completely removed



A red signal surrounded by a lack of fluorescence (demineralization) indicates the presence of an enamo-dental carious lesion



Presence of green-orange hard tissues at the bottom of the cavity: slow evolution of decay completely removed while keeping the healthy tertiary dentin



A black zone surrounded by a demineralization (lack of fluorescence) shows the presence of an enamo-dental carious lesion



Presence of green-orange hard tissues at the bottom of the cavity: slow evolution of decay completely removed while keeping the healthy tertiary dentin

From the article of Pr. Tassery, Head of the Preventive and Restorative Department, Marseilles Dental School, University AMU, LBN Montpellier I. Published in Minim. Interv. Dent. 2011 and in Clin. Oral. Invest. 2013

